



Global Water Group Compression Fittings Catalogue 2023



48 Keane Street, Currajong 4812, Queensland, Australia
25 Staple Street, Seventeen Mile Rocks 4073, Queensland, Australia
Townsville: (07) 4779 0173 | Brisbane: (07) 3517 5595
sales@gwgpoly.com.au
www.gwgvalvesandpoly.com.au



Metric Compression Fittings





Specifications:

- Mechanical compression fittings are approved for use on potable water systems using WRAS and AS/NZS 4020 certified components
- Suitable for use in above and below ground applications
- Compatible for joining high and low-density polyethylene pipes (PE-HD, PE-LD, PE40-63-80 and 100) conforming to pipe standards EN12201 and AS/NZS 4129
- Extensive range of mechanical fittings including compression and saddle designs, giving flexibility for all applications

Core Benefits:

- Mechanical compression fittings suitable for use on metric PN16 pipelines
- Transitions for dissimilar materials available
- Core size range: 16 - 63mm, 75 - 110mm
- PN16 Water

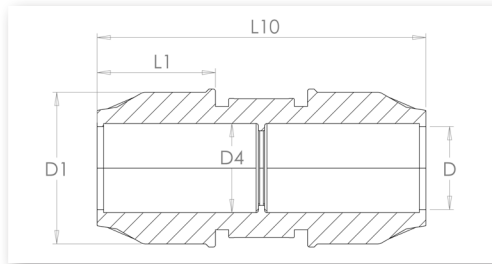
Inside the Product - Metric



- A. Nut - Modern design and unique shape.
- B. Split Ring - Grips the pipe firmly when the system is assembled ensuring that the pipe is not pulled out, even under maximum force.
- C. Insert - Captive with the body during disassembly even if the pipe is pulled off.
- D. O Ring - Certified for being in contact with water intended for human consumption.
- E. System - Unbreakable, corrosion resistant, suitable for tough working conditions such as pipe bending and pulling out.
- F. Body - Made from top quality and certified raw materials.

Metric Coupling

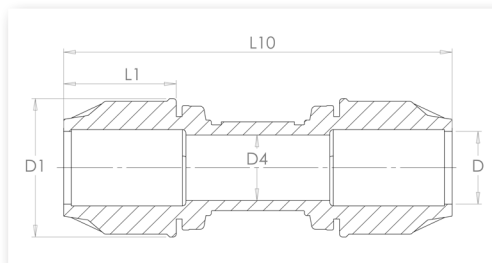
- PP-B
- Potable and Waste Water PN Class
- d16 - 110mm



Size (mm)	Code	L10 (mm)	L1 (mm)	D1 (mm)	D4 (mm)	D (mm)	PN Class	Pack Quantity
16	CMC016	89	35	39.25	17.5	17.5	16	25
20	CMC020	104	39.5	46	22	22.2	16	15
25	CMC025	109	41.25	52.5	26.5	26.75	16	15
32	CMC032	132	51.75	63.75	33.5	34	16	10
40	CMC040	146	60.75	78.25	41.5	41.5	16	1
50	CMC050	174.4	68.5	92.5	51.5	51.5	16	1
63	CMC063	208	82.75	109	64.5	64.5	16	1
75	CMC075	250.9	107.5	132.5	77.25	76	16	1
90	CMC090	293.4	131.25	151.5	91.5	94	16	1
110	CMC110	382.6	166.5	175.5	112.5	112.5	16	1

Metric Repair Coupling

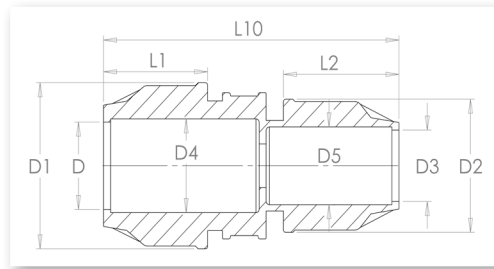
- PP-B
- Potable and Waste Water PN Class
- d25 - 110mm



Size (mm)	Code	L10 (mm)	L1 (mm)	D1 (mm)	D4 (mm)	D (mm)	PN Class	Pack Quantity
25	CMREP025	118.5	41.25	52.5	26.5	26.75	16	10
32	CMREP032	178.75	51.75	63.75	33.5	34	16	5
40	CMREP040	209.25	60.75	78.25	41.5	41.5	16	1
50	CMREP050	239.4	68.5	92.5	51.5	51.5	16	1
63	CMREP063	296	82.75	109	64.5	64.5	16	1
75	CMREP075	250.9	107.5	132.5	77.25	76	16	1
90	CMREP090	293.4	131.25	151.5	91.5	94	16	1
110	CMREP110	382.6	166.5	175.5	112.5	112.5	16	1

Metric Reducing Coupling

- PP-B
- Potable and Waste Water PN Class
- d20x16 - 110x90mm

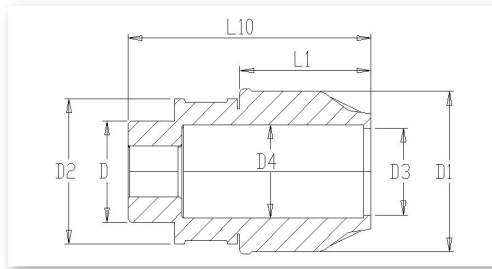


Size (mm)	Code	L10 (mm)	L2 (mm)	L1 (mm)	D2 (mm)	D1 (mm)	D (mm)	D4 (mm)	D5 (mm)	D3 (mm)	PN Class	Pack Quantity
20 x 16	CMRC020016	99.98	35	39.5	39.25	46	22.2	22	17.5	17	16	20
25 x 16	CMRC025016	101.5	35	41.25	39.25	52.5	26.75	26.5	17.5	17	16	20
25 x 20	CMRC025020	106.48	39.5	41.25	46	52.5	26.75	26.5	22.2	21.5	16	15
32 x 20	CMRC032020	120.1	39.5	51.75	46	63.75	34	33.5	22.2	21.5	16	10
32 x 25	CMRC032025	125.38	41.25	51.75	52.5	63.75	34	33.5	26.75	26.5	16	10
40 x 25	CMRC040025	129.75	41.25	60.75	52.5	78.25	41.5	41.5	26.75	26.5	16	1
40 x 32	CMRC040032	140.38	51.75	60.75	63.75	78.25	41.5	41.5	34	33.5	16	1
50 x 25	CMRC050025	-	-	-	-	-	-	-	-	-	16	1
50 x 32	CMRC050032	162.08	51.75	60.75	63.75	92.5	51.5	53	34	33.5	16	1
50 x 40	CMRC050040	162.7	60.75	60.75	78.25	92.5	51.5	53	41.5	42	16	1
63 x 32	CMRC063032	169	51.75	82.75	63.75	109	64.5	64.5	34	33	16	1
63 x 40	CMRC063040	-	-	-	-	-	-	-	-	-	16	1
63 x 50	CMRC063050	193.33	60.75	82.75	78.25	109	64.5	64.5	41.5	52	16	1
75 x 63	CMRC075063	231.95	82.75	107.5	109	132.5	76	77.25	64.5	65.5	16	1
90 x 63	CMRC090063	253.08	82.75	131.25	109	151.5	94	93.25	64.5	65.25	16	1
90 x 75	CMRC090075	264.78	107.5	131.25	132.5	151.5	94	93.75	76	78	16	1
110 x 75	CMRC110075	347.75	107.5	166.5	132.5	175.5	112.5	113	76	77.5	16	1
110 x 90	CMRC110090	352.88	131.25	166.5	151.5	172.5	112.5	113.5	94	92.5	16	1



Metric Male Adaptor

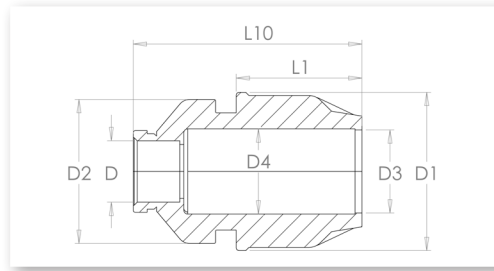
- PP-B
- Potable and Waste Water PN Class
- d16x1/2" - 110x3"



Size	Code	L10 (mm)	D2 (mm)	L1 (mm)	D3 (mm)	D4 (mm)	D1 (mm)	D (Inch)	PN Class	Pack Quantity
16mm x 1/2"	CMMA016X1/2	70.13	34	35	17.5	17.5	39.25	1/2	16	25
16mm x 3/4"	CMMA016X3/4	71.88	34	35	17.5	17.5	39.25	3/4	16	25
20mm x 1/2"	CMMA020X1/2	88.35	41.5	39.5	22.2	21.5	46	1/2	16	25
20mm x 3/4"	CMMA020X3/4	88.35	41.5	39.5	22.2	21.5	46	3/4	16	25
25mm x 1/2"	CMMA025X1/2	92.38	46	41.25	26.75	26.5	52.5	1/2	16	20
25mm x 1"	CMMA025X1	84.13	46	41.25	26.75	26.5	52.5	1	16	20
32mm x 1/2"	CMMA032X1/2	100.25	56.25	51.75	34	33.5	63.75	1/2	16	10
32mm x 3/4"	CMMA032X3/4	95.25	55.5	51.75	34	33.5	63.75	3/4	16	10
32mm x 1"	CMMA032X1	96.25	55.5	51.75	34	33.5	63.75	1	16	10
32mm x 1 1/4"	CMMA032X11/4	98.75	55.5	51.75	34	33.5	63.75	1 1/4	16	10
32mm x 1 1/2"	CMMA032X11/2	99.25	55.5	51.75	34	33.5	63.75	1 1/2	16	10
40mm x 1"	CMMA040X1	110.13	69.5	60.75	41.5	42	78.25	1	16	1
40mm x 1 1/4"	CMMA040X11/4	108.88	68.5	60.75	41.5	42	78.25	1 1/4	16	1
40mm x 1 1/2"	CMMA040X11/2	109.38	69.75	60.75	41.5	42	78.25	1 1/2	16	1
40mm x 2"	CMMA040X2	112.63	69	60.75	41.5	42	78.25	2	16	1
50mm x 1 1/4"	CMMA050X11/4	132.33	80.5	68.5	51.5	53	92.5	1 1/4	16	1
50mm x 1 1/2"	CMMA050X11/2	124.08	79.5	68.5	51.5	53	92.5	1 1/2	16	1
50mm x 2"	CMMA050X2	127.08	79.5	68.5	51.5	53	92.5	2	16	1
63mm x 1 1/2"	CMMA063X11/2	166	98.5	82.75	64.5	65	109	1 1/2	16	1
63mm x 2"	CMMA063X2	164.75	97.5	82.75	64.5	65	109	2	16	1
63mm x 2 1/2"	CMMA063X21/2	164.25	99	82.75	64.5	65	109	2 1/2	16	1
75mm x 2"	CMMA075X2	171.95	117.5	107.5	76	77.5	132.5	2	16	1
75mm x 2 1/2"	CMMA075X21/2	172.95	117.5	107.5	76	77.5	132.5	2 1/2	16	1
75mm x 3"	CMMA075X3	176.7	116.5	107.5	76	77.5	132.5	3	16	1
90mm x 2"	CMMA090X2	199.83	136.5	131.25	94	92.75	151.5	2	16	1
90mm x 2 1/2"	CMMA090X21/2	201.33	137.5	131.25	94	92.75	151.5	2 1/2	16	1
90mm x 3"	CMMA090X3	207.33	138	131.25	94	92.75	151.5	3	16	1
90mm x 4"	CMMA090X4	213.58	137	131.25	94	92.75	151.5	4	16	1
110mm x 2"	CMMA110X2	241.8	164	166.5	112.5	113.25	175.5	2	16	1
110mm x 3"	CMMA110X3	250.55	164.25	166.5	112.5	113.25	175.5	3	16	1

Metric Female Adaptor

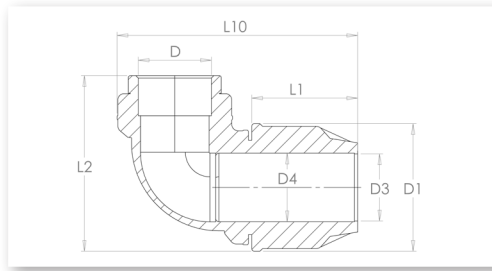
- PP-B
- Potable and Waste Water PN Class
- d16x1/2" - 110x4"



Size	Code	L10 (mm)	D2 (mm)	L1 (mm)	D1 (mm)	D4 (mm)	D3 (mm)	D (Inch)	PN Class	Pack Quantity
16mm x 1/2"	CMFA016X1/2	73.38	34.25	35	39.25	17.5	17.5	1/2	16	25
16mm x 3/4"	CMFA016X3/4	72.88	34.25	35	39.25	17.5	17.5	3/4	16	25
20mm x 1/2"	CMFA020X1/2	70.1	40.5	39.5	46	22	22.2	1/2	16	25
20mm x 3/4"	CMFA020X3/4	70.35	41	39.5	46	22	22.2	3/4	16	25
25mm x 1/2"	CMFA025X1/2	73.13	46.5	41.25	52.5	26.5	26.75	1/2	16	20
25mm x 3/4"	CMFA025X3/4	73.13	46.5	41.25	52.5	26.5	26.75	3/4	16	20
25mm x 1"	CMFA025X1	77.88	54	41.25	52.5	26.5	26.75	1	16	20
32mm x 1/2"	CMFA032X1/2	86.25	55	51.75	63.75	33.5	34	1/2	16	10
32mm x 3/4"	CMFA032X3/4	86.25	55	51.75	63.75	33.5	34	3/4	16	10
32mm x 1"	CMFA032X1	87.75	55	51.75	63.75	33.5	34	1	16	10
32mm x 1 1/4"	CMFA032X11/4	101.75	55	51.75	63.75	33.5	34	1 1/4	16	10
40mm x 1"	CMFA040X1	115.13	70	60.75	78.25	41.5	41.5	1	16	1
40mm x 1 1/4"	CMFA040X11/4	106.38	68.25	60.75	78.25	41.5	41.5	1 1/4	16	1
40mm x 1 1/2"	CMFA040X11/2	106.63	69	60.75	78.25	41.5	41.5	1 1/2	16	1
50mm x 1 1/4"	CMFA050X11/4	120.58	82.5	68.5	92.5	51.5	51.5	1 1/4	16	1
50mm x 1 1/2"	CMFA050X11/2	122.33	82.75	68.5	92.5	51.5	51.5	1 1/2	16	1
50mm x 2"	CMFA050X2	132.58	83	68.5	92.5	51.5	51.5	2	16	1
63mm x 1 1/2"	CMFA063X11/2	141.75	99	82.75	109	64.5	64.5	1 1/2	16	1
63mm x 2"	CMFA063X2	151.5	99	82.75	109	64.5	64.5	2	16	1
63mm x 2 1/2"	CMFA063X21/2	153	99	82.75	109	64.5	64.5	2 1/2	16	1
75mm x 2"	CMFA075X2	167.95	116.5	107.5	132.5	77.25	76	2	16	1
75mm x 2 1/2"	CMFA075X21/2	172.7	117	107.5	132.5	77.25	76	2 1/2	16	1
75mm x 3"	CMFA075X3	173.2	117	107.5	132.5	77.25	76	3	16	1
90mm x 2"	CMFA090X2	-	-	-	-	-	-	2	16	1
90mm x 2 1/2"	CMFA090X21/2	208.58	136.5	131.25	151.5	91.5	95	2 1/2	16	1
90mm x 3"	CMFA090X3	221.08	137.5	131.25	151.5	91.5	94	3	16	1
90mm x 4"	CMFA090X4	219.58	156.5	131.25	151.5	91.5	94	4	16	1
110mm x 3"	CMFA110X3	279.55	156.5	166.5	175.5	112.5	112.5	3	16	1
110mm x 4"	CMFA110X4	292.55	157	166.5	175.5	112.5	112.5	4	16	1

Metric Female 90° Elbow

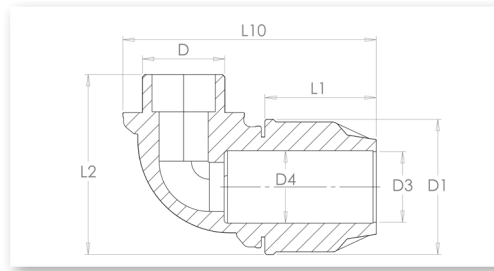
- PP-B
- Potable and Waste Water PN Class
- d20x1/2" - 110x4"



Size	Code	L10 (mm)	L2 (mm)	L1 (mm)	D3 (mm)	D4 (mm)	D1 (mm)	D (Inch)	PN Class	Pack Quantity
20mm x 1/2"	CMFE020X1/2	91.35	68.25	39.5	22.2	22	46	1/2	16	25
20mm x 3/4"	CMFE020X3/4	91.35	67.5	39.5	22.2	22	46	3/4	16	25
25mm x 1/2"	CMFE025X1/2	104.13	73.75	41.25	26.75	26.5	52.5	1/2	16	20
25mm x 3/4"	CMFE025X3/4	103.88	74.25	41.25	26.75	26.5	52.5	3/4	16	20
25mm x 1"	CMFE025X1	104.55	74.75	41.25	26.75	26.5	52.5	1	16	20
32mm x 3/4"	CMFE032X3/4	121.25	80	51.75	34	33.5	63.75	3/4	16	10
32mm x 1"	CMFE032X1	121	74.5	51.75	34	33.5	63.75	1	16	10
40mm x 1 1/4"	CMFE040X11/4	136.63	97.7	60.75	41.5	41.5	78.25	1 1/4	16	1
40mm x 1 1/2"	CMFE040X11/2	137.28	96.95	60.75	41.5	41.5	78.25	1 1/2	16	1
50mm x 1 1/2"	CMFE050X11/2	153.98	115.5	68.5	51.5	51.5	92.5	1 1/2	16	1
50mm x 2"	CMFE050X2	156.38	112.6	68.5	51.5	51.5	92.5	2	16	1
63mm x 2"	CMFE063X2	190.65	134.25	82.75	64.5	64.5	109	2	16	1
63mm x 2 1/2"	CMFE063X21/2	190.6	137.5	82.75	64.5	64.5	109	2 1/2	16	1
75mm x 2 1/2"	CMFE075X21/2	217.2	173	107.5	76	77.25	132.5	2 1/2	16	1
75mm x 3"	CMFE075X3	219.7	175	107.5	76	77.25	132.5	3	16	1
90mm x 3"	CMFE090X3	264.83	170.5	131.25	94	91.5	151.5	3	16	1
110mm x 4"	CMFE110X4	-	-	-	-	-	175.5	4	16	1

Metric Male 90° Elbow

- PP-B
- Potable and Waste Water PN Class
- d16x1/2" - 110x4"

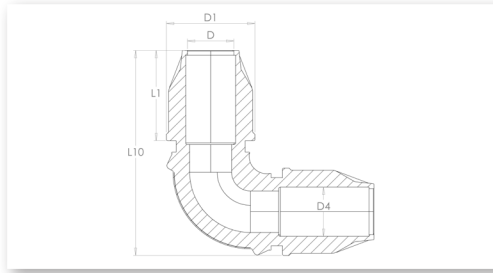


Size	Code	L10 (mm)	L2 (mm)	D1 (mm)	L1 (mm)	D3 (mm)	D4 (mm)	D (Inch)	PN Class	Pack Quantity
16mm x 1/2"	CMME016X1/2	74.63	55.75	39.25	35	17.5	17.5	1/2	16	25
16mm x 3/4"	CMME016X3/4	74.73	57	39.25	35	17.5	17.5	3/4	16	25
20mm x 1/2"	CMME020X1/2	85.1	61.25	46	39.5	22.2	22	1/2	16	25
20mm x 3/4"	CMME020X3/4	88.6	62.75	46	39.5	22.2	22	3/4	16	25
25mm x 1/2"	CMME025X1/2	89.63	68.75	52.5	41.25	26.75	26.5	1/2	16	20
25mm x 3/4"	CMME025X3/4	90.88	69.25	52.5	41.25	26.75	26.5	3/4	16	20
25mm x 1"	CMME025X1	92.93	78.25	52.5	41.25	26.75	26.5	1	16	20
32mm x 3/4"	CMME032X3/4	110.5	84.5	63.75	51.75	34	33.5	3/4	16	10
32mm x 1"	CMME032X1	110.5	83.75	63.75	51.75	34	33.5	1	16	10
40mm x 1 1/4"	CMME040X11/4	136.38	92	78.25	60.75	41.5	41.5	1 1/4	16	1
40mm x 1 1/2"	CMME040X11/2	137.13	92.25	78.25	60.75	41.5	41.5	1 1/2	16	1
50mm x 1 1/2"	CMME050X11/2	152.83	110.75	92.5	68.5	51.5	52.5	1 1/2	16	1
50mm x 2"	CMME050X2	153.33	115	92.5	68.5	51.5	52.5	2	16	1
63mm x 2"	CMME063X2	191.25	133	109	82.75	64.5	65	2	16	1
63mm x 2 1/2"	CMME063X21/2	191	133.75	109	82.75	64.5	65	2 1/2	16	1
75mm x 2 1/2"	CMME075X21/2	219.2	172.25	132.5	107.5	76	78.25	2 1/2	16	1
75mm x 3"	CMME075X3	218.2	171.75	132.5	107.5	76	77.75	3	16	1
90mm x 3"	CMME090X3	265.08	171.5	151.5	131.25	94	92.25	3	16	1
110mm x 4"	CMME110X4	335.8	221	175.5	166.5	112.5	113.5	4	16	1



Metric 90° Elbow

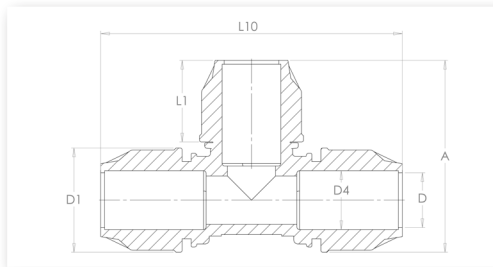
- PP-B
- Potable and Waste Water PN Class
- d16 - 110mm



Size (mm)	Code	L10 (mm)	D1 (mm)	L1 (mm)	D (mm)	D4 (mm)	PN Class	Pack Quantity
16	CME016	75.13	39.25	35	17.5	17.5	16	25
20	CME020	87.85	46	39.5	22.2	22	16	20
25	CME025	97.88	52.5	41.25	26.75	26.5	16	15
32	CME032	118.25	63.75	51.75	34	33.5	16	1
40	CME040	140.43	78.25	60.75	41.5	41.5	16	1
50	CME050	158.18	92.5	68.5	51.5	51.5	16	1
63	CME063	197	109	82.75	64.5	64.5	16	1
75	CME075	215.45	132.5	107.5	76	77.25	16	1
90	CME090	267.83	151.5	131.25	94	91.5	16	1
110	CME110	369.05	175.5	166.5	112.5	112.5	16	1

Metric Equal Tee

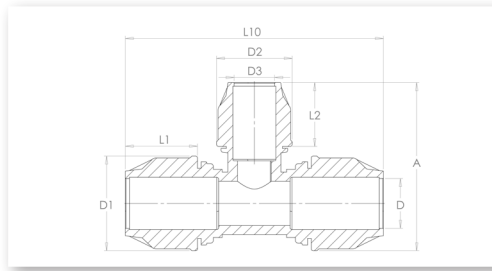
- PP-B
- Potable and Waste Water PN Class
- d16 - 110mm



Size (mm)	Code	L10 (mm)	A (mm)	L1 (mm)	D1 (mm)	D4 (mm)	D (mm)	PN Class	Pack Quantity
16	CMT016	115.25	74.63	35	39.25	17.5	17.5	16	20
20	CMT020	135.20	87.85	39.5	46	22	22.2	16	15
25	CMT025	148.25	97.38	41.25	52.5	26.5	26.75	16	10
32	CMT032	178.75	118	51.75	63.75	33.5	34	16	1
40	CMT040	209.25	203.13	60.75	78.25	41.5	41.5	16	1
50	CMT050	239.4	160.33	68.5	92.5	51.5	51.5	16	1
63	CMT063	296	197.25	82.75	109	64.5	64.5	16	1
75	CMT075	319.9	216.7	107.5	132.5	77.25	76	16	1
90	CMT090	401.65	265.83	131.25	151.5	91.5	94	16	1
110	CMT110	564.6	364.55	166.5	175.5	112.5	112.5	16	1

Metric Reducing Tee

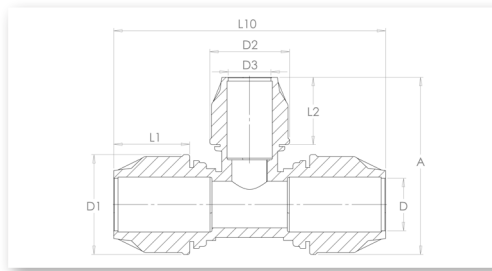
- PP-B
- Potable and Waste Water PN Class
- d20x16 - 110x90mm



Size (mm)	Code	L10 (mm)	A (mm)	D1 (mm)	L1 (mm)	D2 (mm)	L2 (mm)	D3 (mm)	D (mm)	PN Class	Pack Quantity
20 x 16	CMRT020016	135.2	81.88	46	39.5	39.5	35	17.5	22.2	16	10
25 x 20	CMRT025020	148.75	98.1	52.5	41.25	46	39.5	22.2	26.75	16	10
32 x 25	CMRT032025	178	104.38	63.75	51.75	51.5	41.25	26.75	34	16	1
40 x 32	CMRT040032	208.25	135.75	78.25	60.75	63.75	51.75	34	41.5	16	1
50 x 25	CMRT050025	-	-	-	-	-	-	-	-	16	1
50 x 40	CMRT050040	238.65	150.13	92.5	68.5	78.25	60.75	41.5	51.5	16	1
63 x 25	CMRT063025	295.5	157.5	109	82.75	52.5	41.25	26.75	64.5	16	1
63 x 32	CMRT063032	295.5	165.25	109	82.75	63.75	51.75	34	64.5	16	1
63 x 40	CMRT063040	-	-	-	-	-	-	-	-	16	1
63 x 50	CMRT063050	295.5	182.08	109	82.75	92.5	68.5	51.5	64.5	16	1
75 x 63	CMRT075063	318.4	207.55	132.5	107.5	109	82.75	64.5	76	16	1
90 x 75	CMRT090075	401.65	246.2	151.5	131.25	132.5	107.5	76	94	16	1
110 x 90	CMRT110090	561.85	301.83	175.5	166.5	151.5	131.25	94	112.5	16	1

Metric Increasing Tee

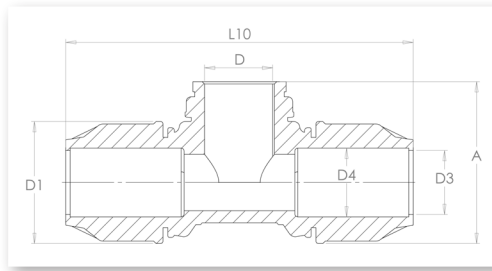
- PP-B
- Potable and Waste Water PN Class
- d20x25 - 25x32mm



Size (mm)	Code	L10 (mm)	A (mm)	D1 (mm)	L1 (mm)	D2 (mm)	L2 (mm)	D3 (mm)	D (mm)	PN Class	Pack Quantity
20 x 25	CMIT020025	-	-	-	-	-	-	-	-	16	10
25 x 32	CMIT025032	-	-	-	-	-	-	-	-	16	1

Metric Female Tee

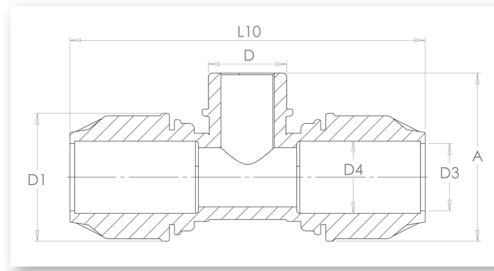
- PP-B
- Potable and Waste Water PN Class
- d16x1/2" - 110X4"



Size	Code	L10 (mm)	A (mm)	D1 (mm)	D3 (mm)	D4 (mm)	D (Inch)	PN Class	Pack Quantity
16mm x 1/2"	CMFT016X1/2	110.25	47	39.25	17.5	17	1/2	16	20
16mm x 3/4"	CMFT016X3/4	112	47	39.25	17.5	17	3/4	16	20
20mm x 1/2"	CMFT020X1/2	132.2	54.5	46	22.2	21.5	1/2	16	15
20mm x 3/4"	CMFT020X3/4	132.2	54.25	46	22.2	21.5	3/4	16	15
25mm x 1/2"	CMFT025X1/2	139.25	57.75	52.5	26.75	25.75	1/2	16	10
25mm x 3/4"	CMFT025X3/4	139.25	57.75	52.5	26.75	25.75	3/4	16	10
25mm x 1"	CMFT025X1	141.75	60.75	52.5	26.75	26.25	1	16	10
32mm x 1/2"	CMFT032X1/2	-	-	-	-	-	1/2	16	10
32mm x 3/4"	CMFT032X3/4	169.5	66.75	63.75	34	33.5	3/4	16	10
32mm x 1"	CMFT032X1	169.5	66.75	63.75	34	33.5	1	16	10
40mm x 1 1/4"	CMFT040X11/4	209.25	98.5	78.25	41.5	42.25	1 1/4	16	1
40mm x 1 1/2"	CMFT040X11/2	209.25	100.25	78.25	41.5	42.75	1 1/2	16	1
50mm x 1 1/2"	CMFT050X11/2	234.65	113.25	92.5	51.5	52.5	1 1/2	16	1
50mm x 2"	CMFT050X2	234.65	113.25	92.5	51.5	52.75	2	16	1
63mm x 2"	CMFT063X2	281.5	122	109	64.5	66.5	2	16	1
63mm x 2 1/2"	CMFT063X21/2	281.5	142	109	64.5	65.25	2 1/2	16	1
75mm x 2"	CMFT075X2	321.4	172	132.5	76	77.75	2	16	1
75mm x 2 1/2"	CMFT075X21/2	321.4	173.75	132.5	76	77.75	2 1/2	16	1
75mm x 3"	CMFT075X3	321.4	174.75	132.5	76	77.75	3	16	1
90mm x 3"	CMFT090X3	402.15	200.5	151.5	94	92.5	3	16	1
110mm x 4"	CMFT110X4	-	-	-	-	-	4	16	1

Metric Male Tee

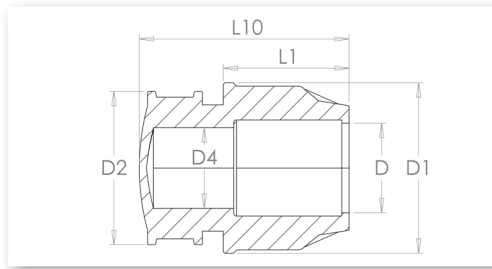
- PP-B
- Potable and Waste Water PN Class
- d16x1/2" - 110x4"



Size	Code	L10 (mm)	A (mm)	D1 (mm)	D3 (mm)	D4 (mm)	D (Inch)	PN Class	Pack Quantity
16mm x 1/2"	CMMT016X1/2	100.63	55.5	39.25	17.5	17.5	1/2	16	20
16mm x 3/4"	CMMT016X3/4	100.63	57.75	39.25	17.5	17.5	3/4	16	20
20mm x 1/2"	CMMT020X1/2	117.1	63.75	46	22.2	22	1/2	16	15
20mm x 3/4"	CMMT020X3/4	117.1	67.75	46	22.2	22	3/4	16	15
25mm x 1/2"	CMMT025X1/2	117.1	67.75	46	22.2	22	1	16	15
25mm x 3/4"	CMMT025X3/4	130.38	72.25	52.5	26.75	26.5	1/2	16	15
25mm x 1"	CMMT025X1	130.38	72.5	52.5	26.75	26.5	3/4	16	10
32mm x 1/2"	CMMT032X1/2	130.38	74	52.5	26.75	26.5	1	16	1
32mm x 3/4"	CMMT032X3/4	152.5	78.5	63.75	34	33.5	1/2	16	1
32mm x 1"	CMMT032X1	152.5	79	63.75	34	33.5	3/4	16	1
40mm x 1"	CMMT040X1	152.5	83	63.75	34	33.5	1	16	1
40mm x 1 1/4"	CMMT040X11/4	178.13	96	78.25	41.5	42	1 1/4	16	1
40mm x 1 1/2"	CMMT040X11/2	179.13	110.75	78.25	41.5	42	1 1/2	16	1
50mm x 1 1/2"	CMMT050X11/2	198.58	110.75	92.5	51.5	52.75	1 1/2	16	1
50mm x 2"	CMMT050X2	198.58	115	92.5	51.5	52.75	2	16	1
63mm x 2"	CMMT063X2	248.5	138.25	109	64.5	65	2	16	1
75mm x 2"	CMMT075X2	275.7	170	132.5	76	77.5	2	16	1
75mm x 2 1/2"	CMMT075X21/2	275.7	171	132.5	76	77.5	2 1/2	16	1
75mm x 3"	CMMT075X3	275.7	171	132.5	76	77.5	3	16	1
90mm x 3"	CMMT090X3	344.33	196.5	151.5	94	92.5	3	16	1
110mm x 4"	CMMT110X4	-	-	-	-	-	4	16	1

Metric End Cap

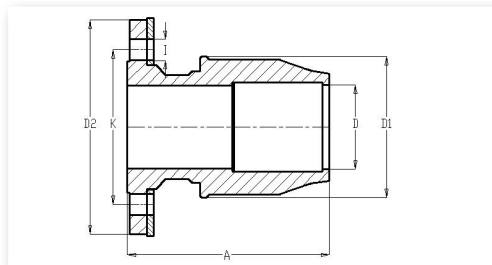
- PP-B
- Potable and Waste Water PN Class
- d16 - 110mm



Size (mm)	Code	L10 (mm)	L1 (mm)	D2 (mm)	D (mm)	D4 (mm)	D1 (mm)	PN Class	Pack Quantity
16	CMECAP016	54.88	35	34.5	17.5	17.5	39.25	16	25
20	CMECAP020	63.85	39.5	41.25	22.2	22	46	16	20
25	CMECAP025	66.63	41.25	46.25	26.75	26.5	52.5	16	20
32	CMECAP032	78	51.75	55.75	34	33.5	63.75	16	10
40	CMECAP040	89.63	60.75	69	41.5	41.5	78.25	16	1
50	CMECAP050	104.58	68.5	80	51.5	51.5	92.5	16	1
63	CMECAP063	125.75	82.75	98	64.5	64.5	109	16	1
75	CMECAP075	149.7	107.5	117.5	76	77	132.5	16	1
90	CMECAP090	175.33	131.25	137	94	92	151.5	16	1
110	CMECAP110	224.8	166.5	164	112.5	113.25	175.5	16	1

Metric Flanged Adaptor

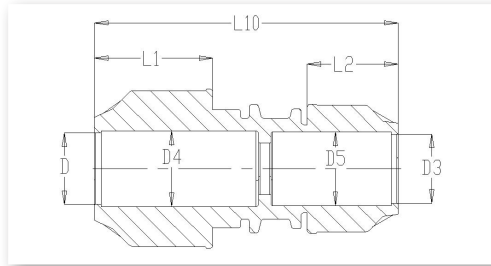
- PP-B
- Potable and Waste Water PN Class
- d50x1 1/2" - 110x4"



Size	Code	D2 (mm)	K (mm)	D (mm)	D1 (mm)	I (mm)	A (mm)	No. of Bolts	PN Class	Pack Quantity
50mm x 1 1/2"	CMFLA050X11/2	150	110	51.5	92.5	18	136	4	16	1
50mm x 2"	CMFLA050X2	165	125	51.5	92.5	18	136	4	16	1
63mm x 2"	CMFLA063X2	165	125	64.5	109	18	153	4	16	1
63mm x 2 1/2"	CMFLA063X21/2	-	-	-	-	-	-	-	16	1
75mm x 2 1/2"	CMFLA075X21/2	185	145	76	132.5	18	168	4	16	1
75mm x 3"	CMFLA075X3	200	160	76	132.5	18	168	8	16	1
90mm x 3"	CMFLA090X3	200	160	94	151.5	18	200	8	16	1
90mm x 4"	CMFLA090X4	220	180	94	151.5	18	200	8	16	1
110mm x 4"	CMFLA110X4	220	180	12.5	175.5	18	231	8	16	1

Metric Universal Coupling

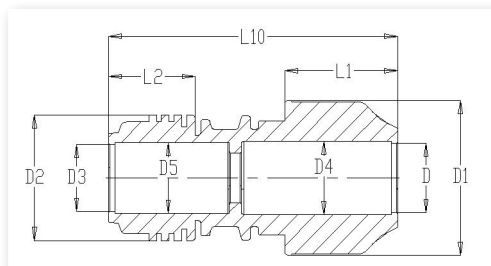
- PP-B
- Potable and Waste Water PN Class
- d15-22x20 - 27-34x32mm



Size (mm)	Code	L10 (mm)	D3 (mm)	D (mm)	L1 (mm)	L2 (mm)	D4 (mm)	D5 (mm)	PN Class	Pack Quantity
15-22 x 20	CMUC020X015	120	21.5	23	51.5	39.5	15/22	22.2	16	1
15-22 x 25	CMUC025X015	125.1	26.5	23	51.5	41.25	15/22	26.75	16	1
20-27 x 25	CMUC025X020	123.25	26.5	27.85	54.2	41.25	20/27	26.75	16	1
20-27 x 32	CMUC032X020	134	33.5	27.85	54.2	51.75	20/27	34	16	1
27-34 x 25	CMUC025X027	127.25	26.5	35.15	58.2	41.25	27/34	26.75	16	1
27-34 x 32	CMUC032X027	137.9	33.5	35.15	58.2	51.75	27/34	34	16	1

Metric Universal Adaptor

- PP-B
- Potable and Waste Water PN Class
- d20x15 - 32x28mm

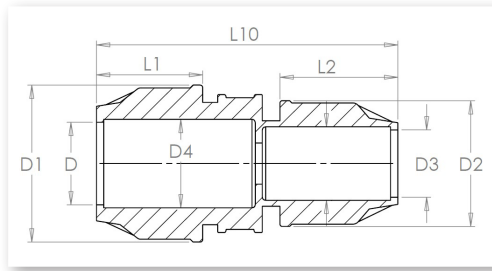


Size (mm)	Code	L10 (mm)	L2 (mm)	L1 (mm)	D4 (mm)	D1 (mm)	D (mm)	D5 (mm)	D3 (mm)	D2 (mm)	PN Class	Pack Quantity
20 x 15	CMUA020X015	86.8	26.15	39.5	22	46	22.2	16	15.25	38	16	15
25 x 15	CMUA025X015	89.3	26.15	41.25	26.5	52.5	26.75	16	15.25	38	16	20
25 x 22	CMUA025X022	85	25.6	41.25	26.5	52.5	26.75	22.5	22.5	50.8	16	10
32 x 22	CMUA032X022	100.4	25.6	51.75	33.5	63.75	34	22.5	22.5	50.8	16	10
32 x 28	CMUA032X028	101.5	26.7	51.75	33.5	63.75	34	30	28.5	60	16	10



Metric Poly to Copper Coupling

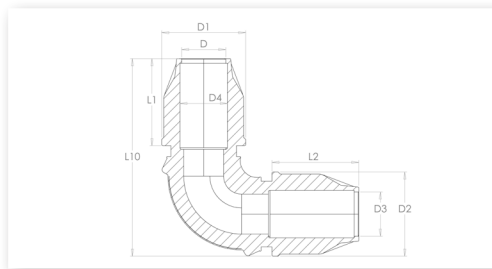
- PP-B
- Potable and Waste Water PN Class
- d20x1/2" - 32x3/4"



Size	Code	L10 (mm)	L2 (mm)	L1 (mm)	D2 (mm)	D1 (mm)	D4 (mm)	D3 (mm)	D (mm)	PN Class	Pack Quantity
20mm x 1/2"	CMCCOP020X1/2	111.5	39.5	39.5	45.75	45.75	22	13.5	22.2	16	1
20mm x 3/4"	CMCCOP020X3/4	117	41.5	39.5	52	45.75	22	20	22.2	16	1
25mm x 1/2"	CMCCOP025X1/2	115.5	39.5	41.5	45.75	52	27	13.5	26.75	16	1
25mm x 3/4"	CMCCOP025X3/4	116.5	41.5	41.5	52	52	27	20	26.75	16	1
32mm x 3/4"	CMCCOP032X3/4	128	41.5	52	52	62.5	34	20	34	16	1

Metric Poly to Copper 90° Elbow

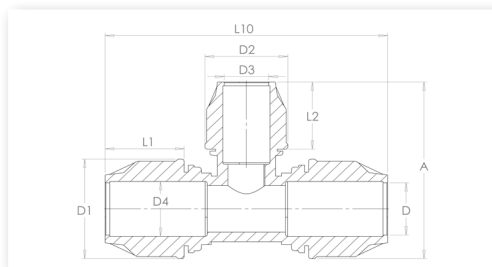
- PP-B
- Potable and Waste Water PN Class
- d20x1/2" - 20x3/4"



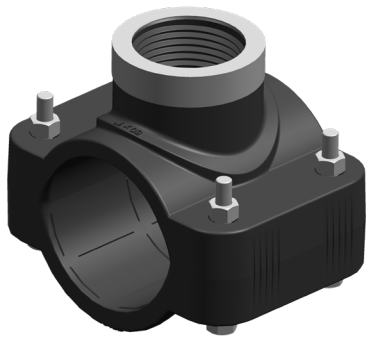
Size	Code	L10 (mm)	D2 (mm)	L2 (mm)	D3 (mm)	D4 (mm)	D (mm)	D1 (mm)	L1 (mm)	PN Class	Pack Quantity
20mm x 1/2"	CMECOP020X1/2	98.5	45.75	39.5	13.5	22	22.2	45.75	39.5	16	1
20mm x 3/4"	CMECOP020X3/4	107	52	41	20	27	26.75	52	41.5	16	1

Metric Poly to Copper Tee

- PP-B
- Potable and Waste Water PN Class
- d20x1/2" - 32x3/4"



Size	Code	L10 (mm)	A (mm)	L2 (mm)	D1 (mm)	D4 (mm)	D3 (mm)	L1 (mm)	D2 (mm)	D (mm)	PN Class	Pack Quantity
25mm x 1/2"	CMTCOP025X1/2	-	-	-	-	-	-	-	-	-	16	1
25mm x 3/4"	CMTCOP025X3/4	147.25	105.25	41.5	52	27	20	41.5	52	26.75	16	1
32mm x 3/4"	CMTCOP032X3/4	-	-	-	-	-	-	-	-	-	16	1



Metric Tapping Saddles





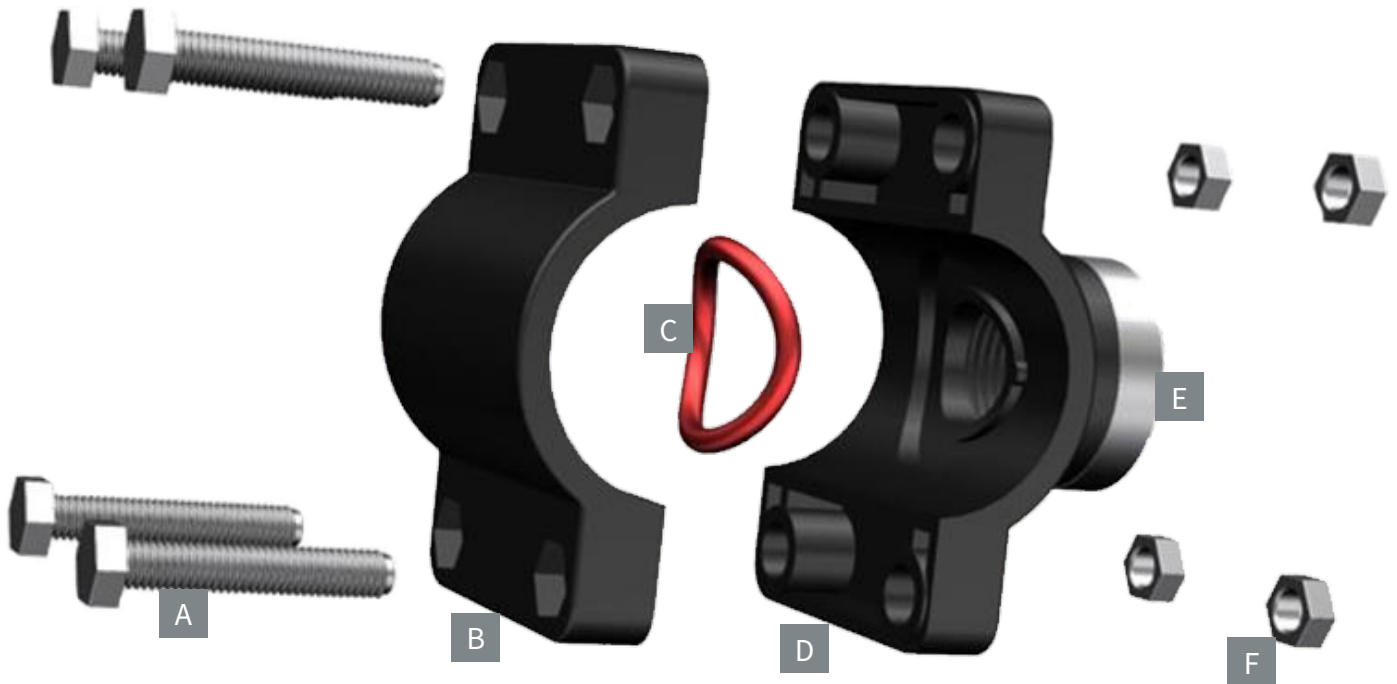
Specifications:

- The high grade polypropylene material used ensures long lasting operation under demanding applications
- Excellent resistance to most commonly used chemicals for such applications
- Suitable for use in potable water supply systems
- Suitable for exposure to sunlight (UV)
- Nitrile sealing gasket for excellent sealing performance and chemical resistance

Core Benefits:

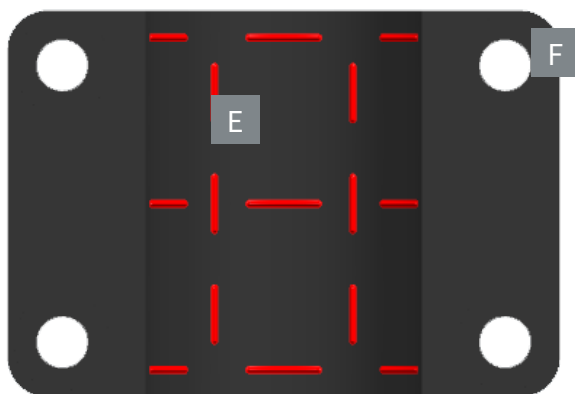
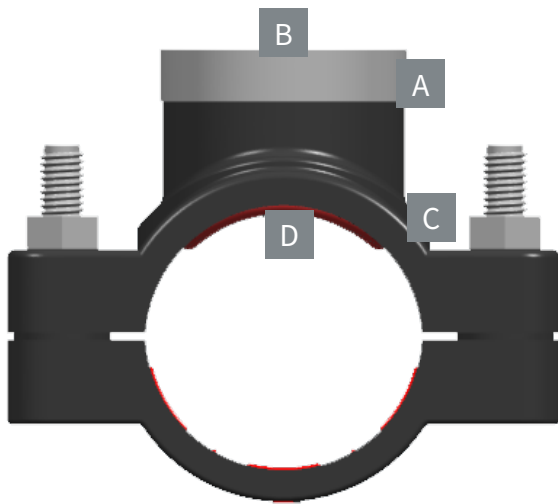
- Mechanical saddle fittings suitable for use on metric pipelines
- Stainless steel bolts and reinforcing ring
- Elastomer seals with radial and axial teeth prevent movement and maintain a pressure tight seal
- Core size range:
 - 20 - 110mm with threads 1/2" - 1"
 - 20 - 110mm with threads 1 1/4" - 2"
 - 125 - 315mm with threads 1/2" - 4"
- PN16 Water, PN12.5 Water, PN6 Water, PN4 Water

Inside the Product - Tapping Saddle



- A. Bolts - Constitute a fundamental part of the saddle in order to enhance restraint performance. The bolts meet the standard of ISO4018 & DIN933.
- B & D. Body - Critical component of the fitting system. can be shaped in several dimensions and configurations, aiding flow characteristics. It has a snagging arrangement internally to position the O ring and insert, ensuring leak-free tightness when assembled. Moulded body with trapezoidal shape to retain bolt head. The body is made with black high performance polypropylene copolymer PP-B.
- C. O Ring - Ensures leak tightness between the fitting system and the interted pipe. It is made with food safe nitrile rubber (NBR 70) to withstand high service temperature, excellent compression set, tear and abrasion resistance.
- E. Reinforcing Ring - Made from stainless or galvanised steel, suitable for female threaded type compression fittings and saddles. Enable high strength and pressure resistance especially on large diameters and threads where the above factors are particularly critical.
- F. Metal Hex Nuts - Made from stainless or galvanised steel, available in several diameters and thicknesses for the optimum fit on each size of saddle.

Inside the Product - Tapping Saddle



A. Stainless steel reinforcement ring that provides extra hold to the BSP thread branch.

B. BSP threaded outlet - various sizes from 1/2" up to 4" according to pipe diameter.

C. Reinforcing rib on the threaded outlet, resisting to long term stress.

D. High quality nitrile gasket with option in shapes, such as O ring or flat.

E. Axial and radial teeth to prevent rotational and axial sliding on the pipe.

F. Bolt hole's guide on upper and lower parts to align during assembly.

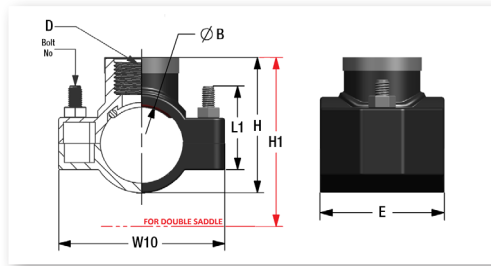
G. Innovative grips for locking the bolt to facilitate easy assembly.

H. Hexagonal grooves to prevent bolt from rotating during assembly.

I. Axial and radial protusion ribs for additional strength and pressure performance.

Metric Tapping Saddle w/ Stainless Steel Reinforcing Ring and Bolts

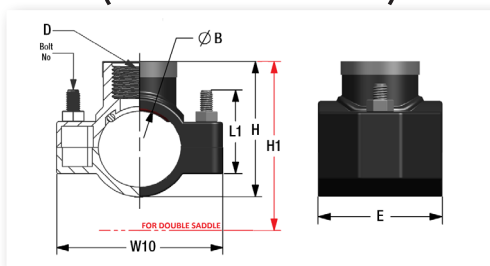
- PP-B body, stainless steel bolts and reinforcing ring
- Potable and Waste Water PN Class
- d25x1/2" - 315x4"



Size	Code	W10 (mm)	H (mm)	E (mm)	L1 (mm)	B (mm)	D (Inch)	No. of Bolts	Bolt Size & Length (mm)	Weight (kg)	PN Class	Pack Quantity
25mm x 1/2"	TSPM025X1/2-SS	48	48	49.5	31	25	1/2	2	M6 x 35	0.07	16	1
25mm x 3/4"	TSPM025X3/4-SS	48	50	49.5	31	25	3/4	2	M6 x 35	0.07	16	1
32mm x 1/2"	TSPM032X1/2-SS	73	57	49.5	36	32	1/2	2	M6 x 35	0.07	16	1
32mm x 3/4"	TSPM032X3/4-SS	73	59.5	49.5	36	32	3/4	2	M6 x 35	0.07	16	1
40mm x 1/2"	TSPM040X1/2-SS	90	71.5	61	34	40	1/2	2	M8 x 40	0.10	16	1
40mm x 3/4"	TSPM040X3/4-SS	92	73.5	61	34	40	3/4	2	M8 x 40	0.11	16	1
40mm x 1"	TSPM040X1-SS	92	75.5	61	34	40	1	2	M8 x 40	0.11	16	1
50mm x 1/2"	TSPM050X1/2-SS	98	76	60	39	50	1/2	2	M8 x 40	0.13	16	1
50mm x 3/4"	TSPM050X3/4-SS	98	80	60	39	50	3/4	2	M8 x 40	0.13	16	1
50mm x 1"	TSPM050X1-SS	98	83	60	39	50	1	2	M8 x 40	0.14	16	1
63mm x 1/2"	TSPM063X1/2-SS	111	90	60	39	63	1/2	2	M8 x 40	0.15	16	1
63mm x 3/4"	TSPM063X3/4-SS	111	92.5	60	39	63	3/4	2	M8 x 40	0.15	16	1
63mm x 1"	TSPM063X1-SS	111	97	60	39	63	1	2	M8 x 40	0.16	16	1
63mm x 1 1/4"	TSPM063X11/4-SS	111	101	77	39	63	1 1/4	4	M8 x 40	0.24	12.5	1
63mm x 1 1/2"	TSPM063X11/2-SS	111	101	77	39	63	1 1/2	4	M8 x 40	0.32	12.5	1
75mm x 1/2"	TSPM075X1/2-SS	122.5	103	72	44	75	1/2	4	M8 x 50	0.26	16	1
75mm x 3/4"	TSPM075X3/4-SS	122.5	106	72	44	75	3/4	4	M8 x 50	0.24	16	1
75mm x 1"	TSPM075X1-SS	122.5	109	72	44	75	1	4	M8 x 50	0.24	16	1
75mm x 1 1/4"	TSPM075X11/4-SS	121.5	111	84	44	75	1 1/4	4	M8 x 50	0.28	12.5	1
75mm x 1 1/2"	TSPM075X11/2-SS	121.5	112	84	44	75	1 1/2	4	M8 x 50	0.29	12.5	1
75mm x 2"	TSPM075X2-SS	122.5	122	97	44	75	2	4	M8 x 50	0.44	16	1
90mm x 1/2"	TSPM090X1/2-SS	-	-	-	-	-	-	-	-	-	16	1
90mm x 3/4"	TSPM090X3/4-SS	-	-	-	-	-	-	-	-	-	16	1
90mm x 1"	TSPM090X1-SS	143.5	129	104	54	90	1	4	M8 x 60	0.44	16	1
90mm x 1 1/4"	TSPM090X11/4-SS	143.5	133	104	54	90	1 1/4	4	M8 x 60	0.45	12.5	1
90mm x 1 1/2"	TSPM090X11/2-SS	143.5	135	104	54	90	1 1/2	4	M8 x 60	0.45	12.5	1
90mm x 2"	TSPM090X2-SS	143.5	140	103	54	90	2	4	M8 x 60	0.49	12.5	1
110mm x 1/2"	TSPM110X1/2-SS	167	147	115	59	110	1/2	4	M8 x 60	0.54	16	1
110mm x 3/4"	TSPM110X3/4-SS	167	149	115	59	110	3/4	4	M8 x 60	0.53	16	1
110mm x 1"	TSPM110X1-SS	167	151	115	59	110	1	4	M8 x 60	0.54	16	1
110mm x 1 1/4"	TSPM110X11/4-SS	167	156	116	59	110	1 1/4	4	M8 x 60	0.55	12.5	1
110mm x 1 1/2"	TSPM110X11/2-SS	167	157	116	59	110	1 1/2	4	M8 x 60	0.57	12.5	1
110mm x 2"	TSPM110X2-SS	167	160	115	59	110	2	4	M8 x 60	0.59	12.5	1
110mm x 3"	TSPM110X3-SS	155	163	127.5	70	110	3	4	M8 x 60	0.48	12.5	1
125mm x 3/4"	TSPM125X3/4-SS	172	167	101	57	125	3/4	4	M8 X 65	0.53	6	1

Metric Tapping Saddle w/ Stainless Steel Reinforcing Ring and Bolts (continued)

- PP-B body, stainless steel bolts and reinforcing ring
- Potable and Waste Water PN Class
- d25x1/2" - 315x4"



Size	Code	W10 (mm)	H (mm)	E (mm)	L1 (mm)	B (mm)	D (Inch)	No. of Bolts	Bolt Size & Length (mm)	Weight (kg)	PN Class	Pack Quantity
125mm x 1"	TSPM125X1-SS	172	167	101	57	125	1	4	M8 x 65	0.53	6	1
125mm x 1 1/4"	TSPM125X11/4-SS	172	167	101	57	125	1 1/4	4	M8 x 65	0.54	6	1
125mm x 1 1/2"	TSPM125X11/2-SS	172	167	101	57	125	1 1/2	4	M8 x 65	0.53	6	1
125mm x 2"	TSPM125X2-SS	172	172.5	101	57	125	2	4	M8 x 65	0.53	6	1
140mm x 3/4"	TSPM140X3/4-SS	190	185	132	56	140	3/4	6	M8 x 65	0.83	6	1
140mm x 1"	TSPM140X1-SS	190	184	131	56	140	1	6	M8 x 65	0.84	6	1
140mm x 1 1/4"	TSPM140X11/4-SS	190	185	132	56	140	1 1/4	6	M8 x 65	0.85	6	1
140mm x 1 1/2"	TSPM140X11/2-SS	190	185	132	56	140	1 1/2	6	M8 x 65	0.84	6	1
140mm x 2"	TSPM140X2-SS	190	196	131	56	140	2	6	M8 x 65	0.72	6	1
160mm x 3/4"	TSPM160X3/4-SS	208	192	137	59	160	3/4	6	M8 x 65	0.80	6	1
160mm x 1"	TSPM160X1-SS	208	192	137	59	160	1	6	M8 x 65	0.79	6	1
160mm x 1 1/4"	TSPM160X11/4-SS	208	193	136	59	160	1 1/4	6	M8 x 65	0.78	6	1
160mm x 1 1/2"	TSPM160X11/2-SS	208	196	137	59	160	1 1/2	6	M8 x 65	0.80	6	1
160mm x 2"	TSPM160X2-SS	208	204	137	59	160	2	6	M8 x 65	0.68	6	1
160mm x 3"	TSPM160X3-SS	213	215	153	59	160	3	6	M8 x 65	1.22	6	1
160mm x 4"	TSPM160X4-SS	213	215	153	59	160	4	6	M8 x 65	1.26	6	1
200mm x 3/4"	TSPM200X3/4-SS	270.5	257	173	70	200	3/4	6	M10 x 80	1.69	6	1
200mm x 1"	TSPM200X1-SS	270.5	257	174	70	200	1	6	M10 x 80	1.69	6	1
200mm x 1 1/4"	TSPM200X11/4-SS	270.5	255	174	70	200	1 1/4	6	M10 x 80	1.71	6	1
200mm x 1 1/2"	TSPM200X11/2-SS	-	-	-	-	-	-	-	-	-	6	1
200mm x 2"	TSPM200X2-SS	270.5	268	173	70	200	2	6	M10 x 80	1.71	6	1
200mm x 3"	TSPM200X3-SS	270.5	268	172	70	200	3	6	M10 x 80	1.69	6	1
200mm x 4"	TSPM200X4-SS	270.5	268	172	70	200	4	6	M10 x 80	1.77	6	1
225mm x 2"	TSPM225X2-SS	287	277	170	88	225	2	6	M10 x 80	1.75	6	1
225mm x 3"	TSPM225X3-SS	287	287	170	88	225	3	6	M10 x 80	1.78	4	1
225mm x 4"	TSPM225X4-SS	287	290	170	88	225	4	6	M10 x 80	1.82	4	1
250mm x 2"	TSPM250X2-SS	310	308	180	88	250	2	6	M10 x 80	2.11	6	1
250mm x 2 1/2"	TSPM250X21/2-SS	-	-	-	-	-	-	-	-	-	6	1
250mm x 3"	TSPM250X3-SS	310	313	180	88	250	3	6	M10 x 80	2.13	4	1
250mm x 4"	TSPM250X4-SS	310	320	180	88	250	4	6	M10 x 80	2.16	4	1
315mm x 2"	TSPM315X2-SS	370.5	381	200	88	315	2	6	M10 x 80	2.88	6	1
315mm x 2 1/2"	TSPM315X21/2-SS	-	-	-	-	-	-	-	-	-	6	1
315mm x 3"	TSPM315X3-SS	307.5	388	200	88	315	3	6	M10 x 80	2.89	4	1
315mm x 4"	TSPM315X4-SS	307.5	396	200	88	315	4	6	M10 x 80	2.91	4	1



Rural Compression Fittings



Specifications:

- Mechanical compression fittings are approved for use on potable water systems using WRAS and AS/NZS 4020 certified components
- Suitable for use in above and below ground applications
- Compatible for joining high and low-density polyethylene pipes (PE-HD, PE-LD, PE40-63-80 and 100) conforming to pipe standards EN12201 and AS/NZS 4129
- Extensive range of mechanical fittings including compression, push fit and saddle designs, giving flexibility for all applications

Core Benefits:

- Mechanical compression fittings suitable for use on Imperial PN10 pipelines
- Transitions from Imperial to Metric available
- Core size range: 3/4" - 2"
- PN10 Water

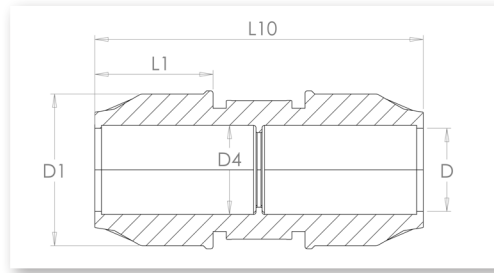
Inside the Product - Rural



- A. Nut - Modern design and unique shape.
- B. Split Ring - Grips the pipe firmly when the system is assembled ensuring that the pipe is not pulled out, even under maximum force.
- C. Insert - Captive with the body during disassembly even if the pipe is pulled off.
- D. O Ring - Certified for being in contact with water intended for human consumption.
- E. System - Unbreakable, corrosion resistant, suitable for tough working conditions such as pipe bending and pulling out.
- F. Body - Made from top quality and certified raw materials.
- G. Rural Insert - Barbed edges to lock inside pipe. Made by black high performance polypropylene copolymer PP-B.

Rural Coupling

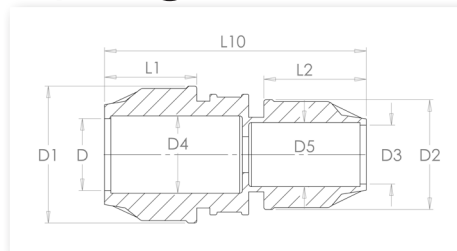
- PP-B
- Potable and Waste Water PN Class
- d3/4" - 2"



Size (Inch)	Code	L10 (mm)	L1 (mm)	D (Inch)	D1 (mm)	D4 (mm)	PN Class	Pack Quantity
3/4	CRC3/4	111.5	45.7	3/4	45.7	20	10	1
1	CRC1	115.5	52	1	52	25	10	1
1 1/4	CRC11/4	138.2	62.5	1 1/4	62.5	32	10	1
1 1/2	CRC11/2	154.5	78	1 1/2	78	40	10	1
2	CRC2	183.2	90.5	2	90.5	50	10	1

Rural Reducing Coupling

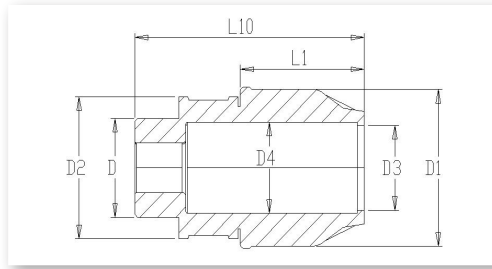
- PP-B
- Potable and Waste Water PN Class
- d1x3/4" - 2x1 1/2"



Size (Inch)	Code	L10 (mm)	L1 (mm)	D1 (mm)	D (Inch)	L2 (mm)	D3 (Inch)	D2 (mm)	D4 (mm)	D5 (mm)	PN Class	Pack Quantity
1 x 3/4	CRRC1X3/4	123	41.5	52	1	39.5	3/4	45.7	25	20	10	1
1 1/4 x 3/4	CRRC11/4X3/4	133.2	52	62.5	1 1/4	41.5	3/4	45.7	32	20	10	1
1 1/4 x 1	CRRC11/4X1	133.7	52	62.5	1 1/4	41.5	1	52	32	25	10	1
1 1/2 x 1	CRRC11/2X1	144.2	60	78	1 1/2	52	1	52	40	25	10	1
1 1/2 x 1 1/4	CRRC11/2X11/4	154.5	60	78	1 1/2	52	1 1/4	62.5	40	32	10	1
2 x 1 1/4	CRRC2X11/4	179.2	68.2	90.5	2	60	1 1/4	62.5	50	32	10	1
2 x 1 1/2	CRRC2X11/2	180.7	68.2	90.5	2	60	1 1/2	78	50	40	10	1

Rural Male Adaptor

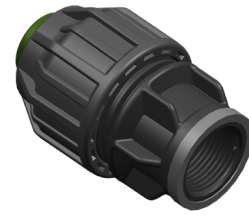
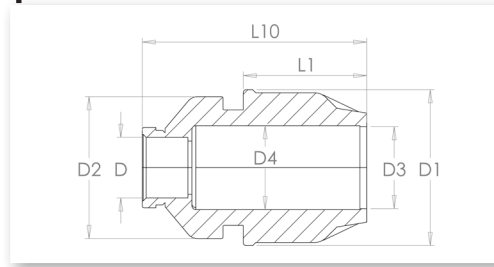
- PP-B
- Potable and Waste Water PN Class
- d3/4x1/2" - 2x2"



Size (Inch)	Code	L10 (mm)	L1 (mm)	D3 (Inch)	D1 (mm)	D (Inch)	D2 (mm)	D4 (mm)	PN Class	Pack Quantity
3/4 x 1/2	CRMA3/4X1/2	80.5	46.5	3/4	45.7	1/2	-	20	10	1
3/4 x 3/4	CRMA3/4X3/4	82.2	46.5	3/4	45.7	3/4	-	20	10	1
3/4 x 1	CRMA3/4X1	83.7	46.5	3/4	45.7	1	-	20	10	1
1 x 1/2	CMRA1X1/2	80	49	1	52	1/2	-	25	10	1
1 x 3/4	CMRA1X3/4	82.5	49	1	52	3/4	-	25	10	1
1 x 1	CRMA1X1	83.5	49	1	52	1	-	25	10	1
1 1/4 x 1/2	CRMA11/4X1/2	94	58.7	1 1/4	62.5	1/2	-	32	10	1
1 1/4 x 3/4	CMRA11/4X3/4	94	58.7	1 1/4	62.5	3/4	-	32	10	1
1 1/4 x 1	CMRA11/4X1	95	58.7	1 1/4	62.5	1	-	32	10	1
1 1/4 x 1 1/4	CMRA11/4X11/4	95	58.7	1 1/4	62.5	1 1/4	-	32	10	1
1 1/4 x 1 1/2	CMRA11/4X11/2	97.7	58.7	1 1/4	62.5	1 1/2	-	32	10	1
1 1/2 x 1	CMRA11/2X1	107.5	67.7	1 1/2	78	1	-	40	10	1
1 1/2 x 1 1/4	CMRA11/2X11/4	109.7	67.7	1 1/2	78	1 1/4	-	40	10	1
1 1/2 x 1 1/2	CMRA11/2X11/2	110	67.7	1 1/2	78	1 1/2	-	40	10	1
1 1/2 x 2	CMRA11/2X2	113.2	67.7	1 1/2	78	2	-	40	10	1
2 x 1	CMRA2X1	122	78.7	2	90.5	1	-	50	10	1
2 x 1 1/4	CMRA2X11/4	122	78.7	2	90.5	1 1/4	-	50	10	1
2 x 1 1/2	CMRA2X11/2	122	78.7	2	90.5	1 1/2	-	50	10	1
2 x 2	CMRA2X2	125	78.7	2	90.5	2	-	50	10	1

Rural Female Adaptor

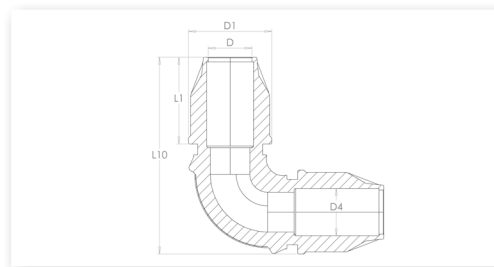
- PP-B
- Potable and Waste Water PN Class
- d3/4x1/2" - 2x2"



Size (Inch)	Code	L10 (mm)	L1 (mm)	D3 (Inch)	D1 (mm)	D (Inch)	D2 (mm)	D4 (mm)	PN Class	Pack Quantity
3/4 x 1/2	CRFA3/4X1/2	75.5	39.5	3/4	45.7	1/2	-	20	10	1
3/4 x 3/4	CRFA3/4X3/4	78.2	39.5	3/4	52	3/4	-	20	10	1
1 x 1/2	CRFA1X1/2	79	41.5	1	52	1/2	-	25	10	1
1 x 3/4	CRFA1X3/4	79	41.5	1	52	3/4	-	25	10	1
1 x 1	CRFA1X1	81.7	41.5	1	62.5	1	-	25	10	1
1 1/4 x 1/2	CRFA11/4X1/2	91.5	52	1 1/4	62.5	1/2	-	32	10	1
1 1/4 x 3/4	CRFA11/4X3/4	91	52	1 1/4	62.5	3/4	-	32	10	1
1 1/4 x 1	CRFA11/4X1	93	52	1 1/4	62.5	1	-	32	10	1
1 1/4 x 1 1/4	CRFA11/4X11/4	94	52	1 1/4	62.5	1 1/4	-	32	10	1
1 1/4 x 1 1/2	CRFA11/4X11/2	93.7	52	1 1/4	78	1 1/2	-	32	10	1
1 1/2 x 1	CRFA11/2X1	115.7	60	1 1/2	78	1	-	40	10	1
1 1/2 x 1 1/4	CRFA11/2X11/4	116.2	60	1 1/2	78	1 1/4	-	40	10	1
1 1/2 x 1 1/2	CRFA11/2X11/2	116.2	60	1 1/2	78	1 1/2	-	40	10	1
2 x 1 1/4	CRFA2X11/4	118	68.2	2	90.5	1 1/4	-	50	10	1
2 x 2 1/2	CRFA2X21/2	118.7	68.2	2	90.5	1 1/2	-	50	10	1
2 x 2	CRFA2X2	122.7	68.2	2	90.5	2	-	50	10	1

Rural 90° Elbow

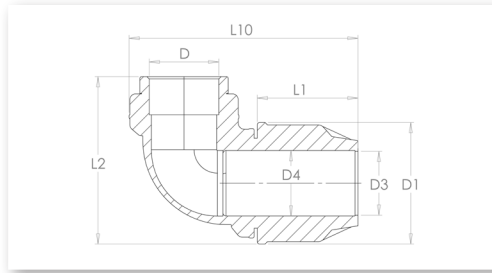
- PP-B
- Potable and Waste Water PN Class
- d3/4" - 2"



Size (Inch)	Code	D1 (mm)	D (Inch)	L1 (mm)	L10 (mm)	D4 (mm)	PN Class	Pack Quantity
3/4	CRE3/4	45.7	3/4	39.5	98.5	20	10	1
1	CRE1	52	1	41.5	106.1	25	10	1
1 1/4	CRE11/4	62.5	1 1/4	52	127.2	32	10	1
1 1/2	CRE11/2	78	1 1/2	60	152.2	40	10	1
2	CRE2	90.5	2	68.2	173.7	50	10	1

Rural Female 90° Elbow

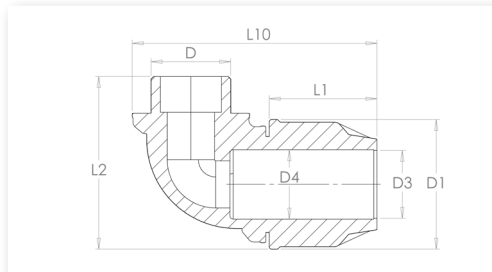
- PP-B
- Potable and Waste Water PN Class
- d3/4x1/2" - 2x2"



Size (Inch)	Code	L10 (mm)	L2 (mm)	L1 (mm)	D3 (Inch)	D1 (mm)	D (Inch)	D4 (mm)	PN Class	Pack Quantity
3/4 x 1/2	CFRE3/4X1/2	93.2	63.9	39.5	3/4	45.7	1/2	20	10	1
3/4 x 3/4	CRFE3/4X3/4	96.5	64	39.5	3/4	52	3/4	20	10	1
1 x 1/2	CRFE1X1/2	101.7	67.2	41.5	1	52	1/2	25	10	1
1 x 3/4	CRFE1X3/4	104.2	67.2	41.5	1	52	3/4	25	10	1
1 x 1	CRFE1X1	105.9	73.5	41.5	1	52	1	25	10	1
1 1/4 x 3/4	CRFE11/4X3/4	118.1	75.5	52	1 1/4	62.5	3/4	32	10	1
1 1/4 x 1	CRFE11/4X1	120.2	79.5	52	1 1/4	62.5	1	32	10	1
1 1/2 x 1 1/4	CRFE11/2X11/4	144.6	100.8	60	1 1/2	78	1 1/4	40	10	1
1 1/2 x 1 1/2	CRFE11/2X11/2	148.2	109	60	1 1/2	78	1 1/2	40	10	1
2 x 1 1/2	CRFE2X11/2	162.5	119.9	68.2	2	90.5	1 1/2	50	10	1
2 x 2	CRFE2X2	168	124.2	68.2	2	90.5	2	50	10	1

Rural Male 90° Elbow

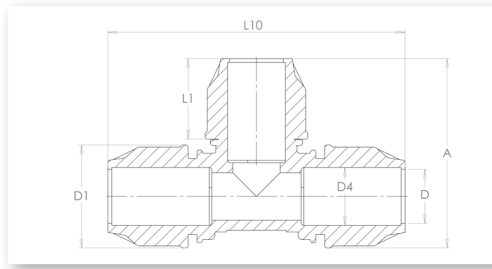
- PP-B
- Potable and Waste Water PN Class
- d3/4x1/2" - 2x2"



Size (Inch)	Code	L10 (mm)	L2 (mm)	L1 (mm)	D3 (Inch)	D1 (mm)	D (Inch)	D4 (mm)	PN Class	Pack Quantity
3/4 x 1/2	CRME3/4X1/2	91.5	63.3	39.5	3/4	45.7	1/2	20	10	1
3/4 x 3/4	CRME3/4X3/4	94.5	64.2	39.5	3/4	52	3/4	20	10	1
1 x 1/2	CRME1X1/2	96.2	70.2	41.5	1	52	1/2	25	10	1
1 x 3/4	CRME1X3/4	97.8	70.2	41.5	1	52	3/4	25	10	1
1 x 1	CRME1X1	101	74	41.5	1	52	1	25	10	1
1 1/4 x 3/4	CRME11/4X3/4	116.1	81.4	52	1 1/4	62	3/4	32	10	1
1 1/4 x 1	CRME11/4X1	117.7	84.95	52	1 1/4	62.5	1	32	10	1
1 1/2 x 1 1/4	CRME11/2X11/4	143.9	98.4	60	1 1/2	78	1 1/4	40	10	1
1 1/2 x 1 1/2	CRME11/2X11/2	144.7	98.4	60	1 1/2	78	1 1/2	40	10	1
2 x 1 1/2	CRME2X11/2	161.9	115.9	68.25	2	90.5	1 1/2	50	10	1
2 x 2	CRME2X2	161.9	118.6	68.25	2	90.5	2	50	10	1

Rural Equal Tee

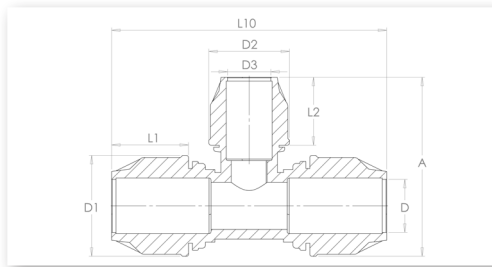
- PP-B
- Potable and Waste Water PN Class
- d3/4" - 2"



Size (Inch)	Code	L10 (mm)	A (mm)	L1 (mm)	D (Inch)	D1 (mm)	D4 (mm)	Weight (kg)	PN Class	Pack Quantity
3/4	CRT3/4	147.9	94.3	39.5	3/4	45.7	20	-	10	1
1	CRT1	162.2	104.2	41.5	1	52	25	-	10	1
1 1/4	CRT11/4	190	122.8	52	1 1/4	62.5	32	-	10	1
1 1/2	CRT11/2	224.7	157.5	60	1 1/2	78	40	-	10	1
2	CRT2	255.3	198.2	68.2	2	90.5	50	-	10	1

Rural Reducing Tee

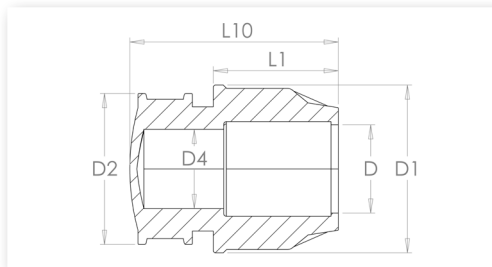
- PP-B
- Potable and Waste Water PN Class
- d1x3/4" - 2x1 1/2"



Size (Inch)	Code	L10 (mm)	D2 (mm)	D3 (Inch)	L1 (mm)	D1 (mm)	L2 (mm)	D (Inch)	A (mm)	PN Class	Pack Quantity
1 x 3/4	CRRT1X3/4	154.3	45.7	3/4	41.5	52	46.5	1	108	10	1
1 1/4 x 1	CRRT11/4X1	183.8	52	1	52	62.5	49	1 1/4	115	10	1
1 1/2 x 1 1/4	CRRT11/2X11/4	215.9	62.5	1 1/4	60	78	58.7	1 1/2	144.8	10	1
2 x 1 1/2	CRRT2X11/2	244.3	78	1 1/2	68.2	90.5	67.7	2	163.9	10	1

Rural End Cap

- PP-B
- Potable and Waste Water PN Class
- d3/4" - 2"

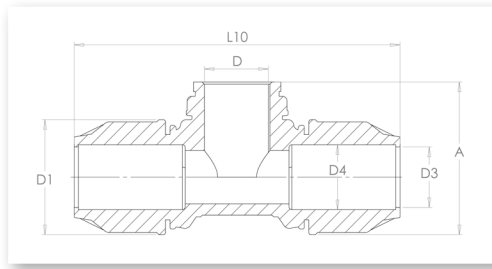


Size (Inch)	Code	L10 (mm)	L1 (mm)	D (Inch)	D1 (mm)	D2 (mm)	D4 (mm)	PN Class	Pack Quantity
3/4	CRECAP3/4	71.7	78.7	3/4	45.7	-	20	10	1
1	CRECAP1	74	81.5	1	52	-	25	10	1
1 1/4	CRECAP11/4	84.7	91.5	1 1/4	62.5	-	32	10	1
1 1/2	CRECAP11/2	97.7	105.5	1 1/2	78	-	40	10	1
2	CRECAP2	113.5	124	2	90.5	-	50	10	1



Rural Female Tee

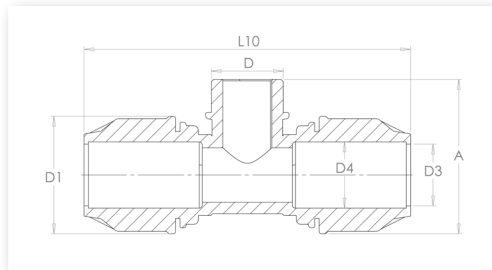
- PP-B
- Potable and Waste Water PN Class
- d3/4x1/2" - 2x2"



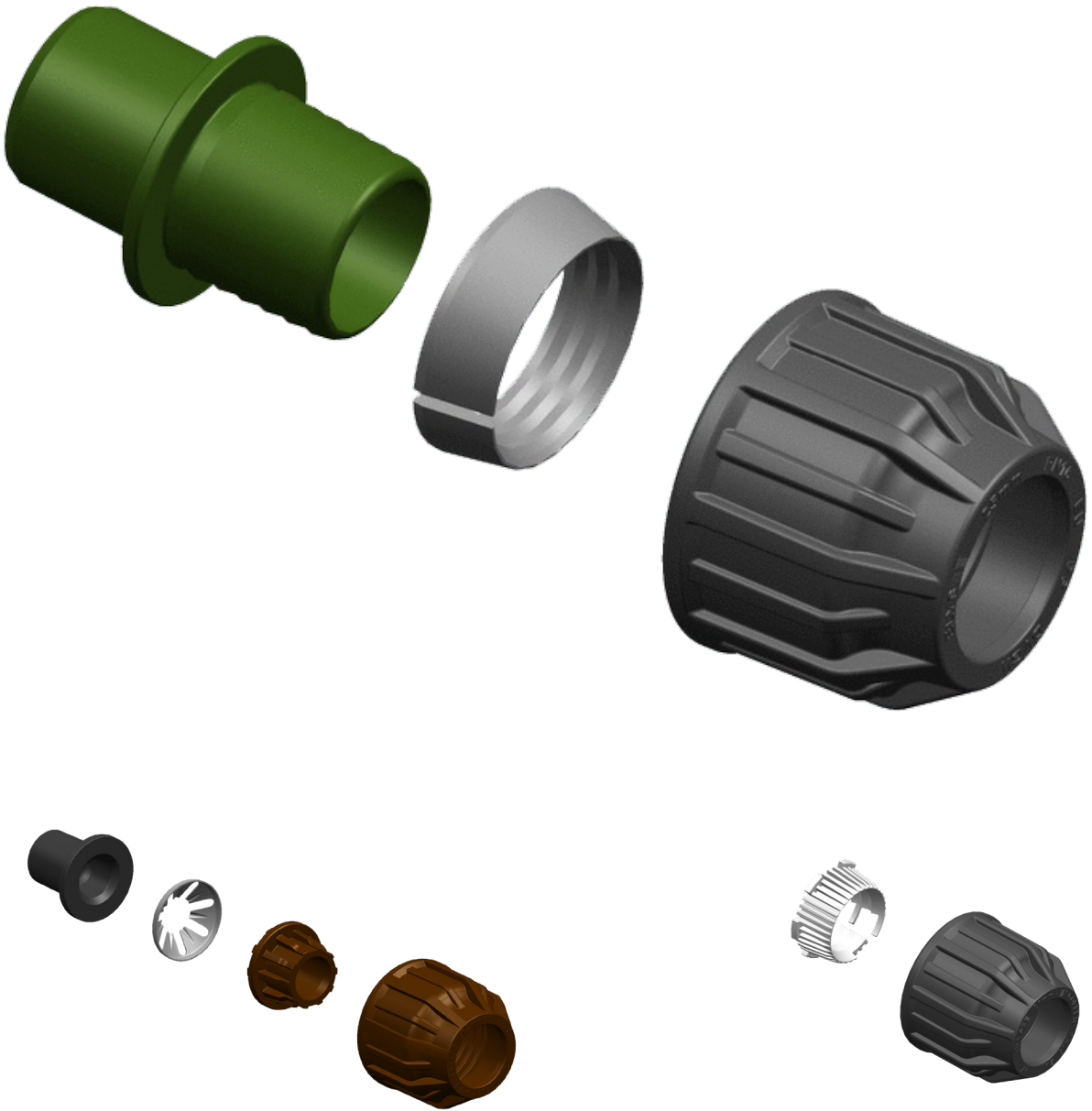
Size (Inch)	Code	L10 (mm)	A (mm)	D3 (Inch)	D1 (mm)	D (Inch)	D4 (mm)	PN Class	Pack Quantity
3/4 x 1/2	CRFT3/4X1/2	145.2	56	3/4	45.7	1/2	20	10	1
3/4 x 3/4	CRFT3/4X3/4	145.2	56	3/4	52	3/4	20	10	1
1 x 1/2	CRFT1X1/2	153.7	60.4	1	52	1/2	25	10	1
1 x 3/4	CRFT1X3/4	153.5	59.6	1	52	3/4	25	10	1
1 x 1	CRFT1X1	155.9	63	1	52	1	25	10	1
1 1/4 x 3/4	CRFT11/4X3/4	180.9	63.7	1 1/4	62.5	3/4	32	10	1
1 1/4 x 1	CRFT11/4X1	180.8	68.4	1 1/4	62.5	1	32	10	1
1 1/2 x 1 1/4	CRFT11/2X11/4	219.2	105.8	1 1/2	78	1 1/4	40	10	1
1 1/2 x 1 1/2	CRFT11/2X11/2	219.7	106	1 1/2	78	1 1/2	40	10	1
1 1/2 x 2	CRFT11/2X2	255.6	119.1	2	90.5	1 1/2	50	10	1
2 x 2	CRFT2X2	255.7	124.8	2	90.5	2	50	10	1

Rural Male Tee

- PP-B
- Potable and Waste Water PN Class
- d3/4x1/2" - 2x2"



Size (Inch)	Code	L10 (mm)	A (mm)	D3 (Inch)	D1 (mm)	D (Inch)	D4 (mm)	PN Class	Pack Quantity
3/4 x 1/2	CRMT3/4X1/2	147.6	66.2	3/4	45.7	1/2	20	10	1
3/4 x 3/4	CRMT3/4X3/4	147.7	67.2	3/4	45.7	3/4	20	10	1
3/4 x 1	CRMT3/4X1	148.2	70.7	3/4	45.7	1	20	10	1
1 x 1/2	CRMT1X1/2	161.9	75	1	52	1/2	25	10	1
1 x 3/4	CRMT1X3/4	162.1	75.3	1	52	3/4	25	10	1
1 x 1	CRMT1X1	162.3	76.4	1	52	1	25	10	1
1 1/4 x 1/2	CRMT11/4X1/2	190.3	83	1 1/4	62.5	1/2	32	10	1
1 1/4 x 3/4	CRMT11/4X3/4	190.1	83	1 1/4	62.5	3/4	32	10	1
1 1/4 x 1	CRMT11/4X1	190.4	85.9	1 1/4	62.5	1	32	10	1
1 1/2 x 1	CRMT11/2X1	224.2	102.3	1 1/2	78	1	40	10	1
1 1/2 x 1 1/4	CRMT11/2X11/4	223.9	104.9	1 1/2	78	1 1/4	40	10	1
1 1/2 x 1 1/2	CRMT11/2X11/2	224.1	105	1 1/2	78	1 1/2	40	10	1
2 x 1 1/2	CRMT2X11/2	225.1	116	2	90.5	1 1/2	50	10	1
2 x 2	CRMT2X2	225.1	118.9	2	90.5	2	50	10	1



Accessories





Specifications:

- Mechanical compression fittings are approved for use on potable water systems using WRAS and AS/NZS 4020 certified components
- Suitable for use in above and below ground applications
- Compatible for joining high and low-density polyethylene pipes (PE-HD, PE-LD, PE40-63-80 and 100) conforming to pipe standards EN12201 and AS/NZS 4129
- Extensive range of mechanical fittings including compression, push fit and saddle designs, giving flexibility for all applications

Core Benefits:

- Compatible with all compression fittings featured in this catalogue
- Available in Metric-Rural, Rural-Metric and Poly-Copper

Conversion Kit - Poly to Copper

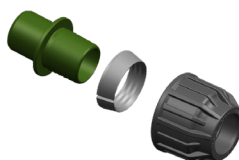
- PP-B
- Suitable for use with all Fusaplast compression fittings
- d20x1/2" - 25x3/4"



Size	Code	Pack Quantity
20mm x 1/2"	CMCKCOP20X1/2	1
25mm x 3/4"	CMCKCOP25X3/4	1

Conversion Kit - Metric to Rural

- PP-B
- Suitable for use with all Fusaplast compression fittings
- d20x3/4" - 50x2"



Size	Code	Pack Quantity
20mm x 3/4"	CMCKR3/4	1
25mm x 1"	CMCKR1	1
32mm x 1 1/4"	CMCKR11/4	1
40mm x 1 1/2"	CMCKR11/2	1
50mm x 2"	CMCKR2	1

Conversion Kit - Rural to Metric

- PP-B
- Suitable for use with all Fusaplast compression fittings
- d20x1/2" - 25x3/4"



Size	Code	Pack Quantity
3/4" x 20mm	CRCKM020	1
1" x 25mm	CRCKM025	1
1 1/4" x 32mm	CRCKM032	1
1 1/2" x 40mm	CRCKM040	1
2" x 50mm	CRCKM050	1

BSP Threaded Fittings

Socket

- PP-B
- Potable and Waste Water PN Class
- d3/4" - 3"



Size (Inch)	Code	PN Class	Pack Quantity
3/4	PBSPS3/4	16	1
1	PBSPS1	16	1
1 1/4	PBSPS11/4	16	1
1 1/2	PBSPS11/2	16	1
2	PBSPS2	16	1
2 1/2	PBSPS21/2	16	1
3	PBSPS3	16	1

Nipple

- PP-B
- Potable and Waste Water PN Class
- d1/2" - 4"



Size (Inch)	Code	PN Class	Pack Quantity
1/2	PBSPN1/2	16	1
3/4	PBSPN3/4	16	1
1	PBSPN1	16	1
1 1/4	PBSPN11/4	16	1
1 1/2	PBSPN11/2	16	1
2	PBSPN2	16	1
2 1/2	PBSPN21/2	16	1
3	PBSPN3	16	1
4	PBSPN4	16	1

Cap

- PP-B
- Potable and Waste Water PN Class
- d1/2" - 2 1/2"



Size (Inch)	Code	PN Class	Pack Quantity
1/2	PBSPC1/2	16	1
3/4	PBSPC3/4	16	1
1	PBSPC1	16	1
1 1/4	PBSPC11/4	16	1
1 1/2	PBSPC11/2	16	1
2	PBSPC2	16	1
2 1/2	PBSPC21/2	16	1

Plug

- PP-B
- Potable and Waste Water PN Class
- d1/2" - 4"



Size (Inch)	Code	PN Class	Pack Quantity
1/2	PBSPP1/2	16	1
3/4	PBSPP3/4	16	1
1	PBSPP1	16	1
1 1/4	PBSPP11/4	16	1
1 1/2	PBSPP11/2	16	1
2	PBSPP2	16	1
2 1/2	PBSPP21/2	16	1
3	PBSPP3	16	1
4	PBSPP4	16	1

90° Female Elbow

- PP-B
- Potable and Waste Water PN Class
- d1/2" - 2"



Size (Inch)	Code	PN Class	Pack Quantity
1/2	PBSPEF1/2	16	1
3/4	PBSPEF3/4	16	1
1	PBSPEF1	16	1
1 1/4	PBSPEF11/4	16	1
1 1/2	PBSPEF11/2	16	1
2	PBSPEF2	16	1

90° Male/Female Elbow

- PP-B
- Potable and Waste Water PN Class
- d1/2" - 1 1/2"



Size (Inch)	Code	PN Class	Pack Quantity
1/2	PBSPEMF1/2	16	1
3/4	PBSPEMF3/4	16	1
1	PBSPEMF1	16	1
1 1/4	PBSPEMF11/4	16	1
1 1/2	PBSPEMF11/2	16	1

Female Tee

- PP-B
- Potable and Waste Water PN Class
- d1/2" - 2"



Size (Inch)	Code	PN Class	Pack Quantity
1/2	PBSPTF1/2	16	1
3/4	PBSPTF3/4	16	1
1	PBSPTF1	16	1
1 1/4	PBSPTF11/4	16	1
1 1/2	PBSPTF11/2	16	1
2	PBSPTF2	16	1

Male Tee

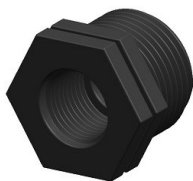
- PP-B
- Potable and Waste Water PN Class
- d1/2" - 2"



Size (Inch)	Code	PN Class	Pack Quantity
1/2	PBSPMT1/2	16	1
3/4	PBSPMT3/4	16	1
1	PBSPMT1	16	1
1 1/4	PBSPMT11/4	16	1
1 1/2	PBSPMT11/2	16	1
2	PBSPMT2	16	1

Reducing Bush

- PP-B
- Potable and Waste Water PN Class
- d3/4x1/2" - 4x3"



Size (Inch)	Code	PN Class	Pack Quantity
3/4 x 1/2	PBSPBR3/4X1/2	16	1
1 x 1/2	PBSPBR1X1/2	16	1
1 x 3/4	PBSPBR1X3/4	16	1
1 1/4 x 1/2	PBSPBR11/4X1/2	16	1
1 1/4 x 3/4	PBSPBR11/4X3/4	16	1
1 1/4 x 1	PBSPBR11/4X1	16	1
1 1/2 x 1/2	PBSPBR11/2X1/2	16	1
1 1/2 x 3/4	PBSPBR11/2X3/4	16	1
1 1/2 x 1	PBSPBR11/2X1	16	1
1 1/2 x 1 1/4	PBSPBR11/2X11/4	16	1
2 x 1/2	PBSPBR2X1/2	16	1
2 x 3/4	PBSPBR2X3/4	16	1
2 x 1	PBSPBR2X1	16	1
2 x 1 1/4	PBSPBR2X11/4	16	1
2 x 1 1/2	PBSPBR2X11/2	16	1
2 1/2 x 1	PBSPBR21/2X1	16	1
2 1/2 x 1 1/4	PBSPBR21/2X11/4	16	1
2 1/2 x 2	PBSPBR21/2X2	16	1
3 x 2	PBSPBR3X2	16	1
3 x 2 1/2	PBSPBR3X21/2	16	1
4 x 2	PBSPBR4X2	16	1
4 x 3	PBSP4X3	16	1



Reducing Socket

- PP-B
- Potable and Waste Water PN Class
- d1/2x3/8" - 3x2 1/2"



Size (Inch)	Code	PN Class	Pack Quantity
1/2 x 3/8	PBSPSR1/2X3/8	16	1
3/4 x 1/2	PBSPSR3/4X1/2	16	1
3/4 x 3/8	PBSPSR3/4X3/8	16	1
3/4 x 1/4	PBSPSR3/4X1/4	16	1
1 x 1/2	PBSPSR1X1/2	16	1
1 x 3/4	PBSPSR1X3/4	16	1
1 1/4 x 1	PBSPSR11/4X1	16	1
1 1/2 x 1	PBSPSR11/2X1	16	1
1 1/2 x 1 1/4	PBSPSR11/2X11/4	16	1
2 x 3/4	PBSPSR2X3/4	16	1
2 x 1	PBSPSR2X1	16	1
2 x 1 1/4	PBSPSR2X11/4	16	1
2 x 1 1/2	PBSPSR2X11/2	16	1
2 1/2 x 2	PBSPSR21/2X2	16	1
3 x 2 1/2	PBSPSR3X21/2	16	1

Male Reducing Tee

- PP-B
- Potable and Waste Water PN Class
- d1 1/4x1" - 3x2"



Size (Inch)	Code	PN Class	Pack Quantity
1 1/4 x 1	PBSPMRT11/4X1	16	1
1 1/2 x 3/4	PBSPMRT11/2X3/4	16	1
1 1/2 x 1	PBSPMRT11/2X1	16	1
2 x 1	PBSPMRT2X1	16	1
2 x 1 1/2	PBSPMRT2X21/2	16	1
2 1/2 x 2	PBSPMRT21/2X2	16	1
3 x 2	PBSPMRT3X2	16	1

Reducing Nipple

- PP-B
- Potable and Waste Water PN Class
- d1/2x3/8" - 3x2 1/2"



Size (Inch)	Code	PN Class	Pack Quantity
1/2 x 3/8	PBSPNR1/2X3/8	16	1
3/4 x 1/2	PBSPNR3/4X1/2	16	1
1 x 1/2	PBSPNR1X1/2	16	1
1 x 3/4	PBSPNR1X3/4	16	1
1 1/4 x 3/4	PBSPNR11/4X3/4	16	1
1 1/4 x 1	PBSPNR11/4X1	16	1
1 1/2 x 1	PBSPNR11/2X1	16	1
1 1/2 x 1 1/4	PBSPNR11/2X11/4	16	1
2 x 1	PBSPNR2X1	16	1
2 x 1 1/4	PBSPNR2X11/4	16	1
2 x 1 1/2	PBSPNR2X11/2	16	1
2 1/2 x 2	PBSPNR21/2X2	16	1
3 x 2	PBSPNR3X2	16	1
3 x 2 1/2	PBSPNR3X21/2	16	1

Male/BSP x Female/BSP Adaptor

- PP-B
- Potable and Waste Water PN Class
- d3/4x1/2" - 1x3/4"



Size (Inch)	Code	PN Class	Pack Quantity
3/4 x 1/2	PBSPAMF3/4X1/2	16	1
3/4 x 3/4	PBSPAMF3/4X3/4	16	1
1 x 1/2	PBSPAMF1X1/2	16	1
1 x 3/4	PBSPAMF1X3/4	16	1

The GWG Difference

For almost 40 years, Global Water Group (GWG) has been committed to meeting our customers' expectations and requirements with quality products and reliable service. We have experience in agriculture, aquaculture, farming, civil, mining, government and construction.

From design, sourcing, manufacturing and assembly through to packing, distributing and delivery, the GWG point of difference is **quality**. We service clients located throughout Queensland and Australia with our innovative product range and have earned our reputation for providing tailored solutions that reduce costs without compromising on quality or delivery.

Our Townsville and Brisbane warehouses are permanently stocked and our Townsville location features a fabrication facility, fully staffed by a team of highly experienced and qualified personnel.

We are your one-stop shop for everything polyethylene pipe and valves. Our wide range of products includes:

- Butt Weld, Electrofusion, Compression and BSP Fittings
- Butterfly Valves, Check Valves, Gate Valves and Ball Valves
- Backing and Blind Flanges (Galvanised and S/S)
- Gasket Sets
- PE Pipe (Blueline, All Black, Corrugated Stormwater)
- Machinery and Tooling Equipment (Electrofusion Machinery and Tooling, Pipe and Fitting Butt Welders, Pipe Cutting and Scraping Tools)

All of our products are Watermarked and made to Australian/New Zealand Standards. MDRs are available upon request.

Global Water Group



48 Keane Street, Currajong 4812, Queensland, Australia
25 Staple Street, Seventeen Mile Rocks 4073, Queensland, Australia
Townsville: (07) 4779 0173 | Brisbane: (07) 3517 5595
sales@gwgpoly.com.au
www.gwgvalvesandpoly.com.au

